

on to its objective.

Both battalions reached their objective by nightfall, despite constant and heavy shelling, and Co I went back and took over the road block.

The 2d Battalion remained in position during the day, with Co F reinforced by a machine gun section from Co G, on Hill 617, and the rest of the battalion in the valley around Halley and Grebefosse. Fighting was confined to patrol actions.

The end of the month found the 100th and 3d Battalions digging in on Hill 595 under artillery fire.

ANNOUNCEMENTS

National Cancer Institute Prostate, Lung, Colorectal & Ovarian Cancer Screening Trial

The PLCO Cancer Screening Trial is a nationwide study being conducted on men and women between the ages of 60 and 74 to determine if screening for early signs of cancers of the prostate, lung, colorectum, and ovaries will reduce the number of people who die from these cancers each year. Hawaii has been chosen by the National Cancer Institute as one of 10 sites across the United States for this important study. Currently, there are nearly 1,000 participants enrolled in Hawaii. However, the goal of the National Cancer Institute and the Pacific Health Research Institute is to recruit 15,000 Hawaii residents. Due to the great number of Asians and Pacific Islanders who reside in Hawaii, the segment of the PLCO study being conducted in Hawaii is of great interest to the National Cancer Institute as relatively few health research studies include a large number of Asians, Pacific Islanders, and other people of color.

Some commonly asked questions:

What do I have to do?

*Answer some questions about your health and family history.

*You may be asked to have free screening tests done.

Who is doing the study?

*The National Cancer Institute and Pacific

Health Research Institute.

What is the study about?

*The study will find out if annual examinations for the early signs of cancers of the prostate, lung, rectum, and ovaries will reduce the number of deaths from these cancers.

How can I participate?

*Call SARAH at 545-3006 for more information or to enroll.

YOUR PARTICIPATION CAN MAKE A DIFFERENCE!



BRUYERES/BIFFONTAINE 50TH ANNIVERSARY PLAQUES

These plaques, commemorating the 50th Anniversary of the liberation of Bruyeres and Biffontaine will be presented by the 442nd RCT to Mayor Alain Thirion and Mayor Georges Henry, respectively, by Mr. RONALD OBA in October, 1994.

442ND REGIMENTAL COMBAT TEAM FOUNDATION

The 442nd Regimental Combat Team Foundation has been in operation for less than a year, but it has been receiving some support from members and others. We are grateful for such responses. We hope that future contributions from members and the public will continue.

We have developed forms for grants to be made for worthy causes, which meet the criteria for making such grants. Grant forms can be obtained from the 442nd Veterans Club at 933 Wiliwili St., Honolulu, HI. 96826.

We wish to thank the following people who have made contributions from the inception of the Foundation to May 25, 1994:



GRACE TSUBATA FUJII *(In memory of JACQUELINE KENNEDY ONASSIS)*

HAROLD FUKUNAGA

TERUO IHARA

HENRY KUNIYUKI *(In memory of EDWARD OMOHUNDRO)*

WALTER MATSUMOTO

MR. & MRS. TAKESHI NAKAMURA *(1994/1995 Pledge)*

KATSUKI TANIGAWA

MR. & MRS. ERNEST UNO *(In memory of MINORU SUZUMOTO)*

MRS. AI YAMADA *(In memory of REVEREND MASAO YAMADA)*

MR. & MRS. HENRY "BRUNO" YAMADA *(1994/1995 Pledge)*

(In memory of HENRY OYASATO)

TERUO IHARA

RONALD OBA

EDWIN KAWAHARA

LARRY TAMANAHA

MICHAEL KAWAHARA

HARRY TOKUSHIGE

JACKSON MORISAWA

KAORU WATANABE

RICHARD MURASHIGE

MR. & MRS. ERNEST UNO

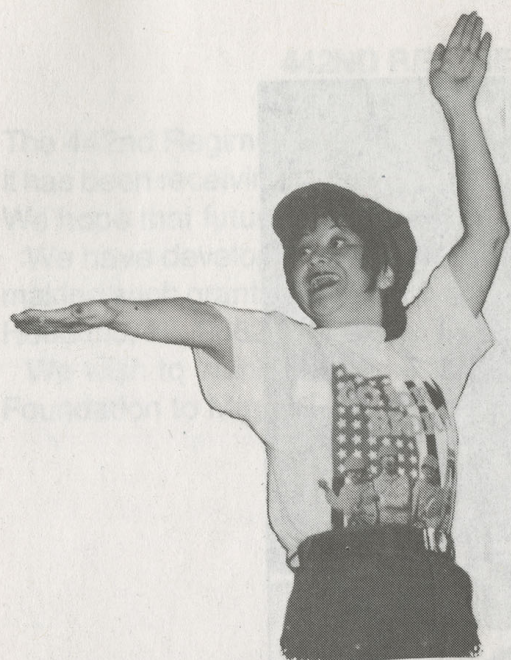
GEORGE NAKASATO



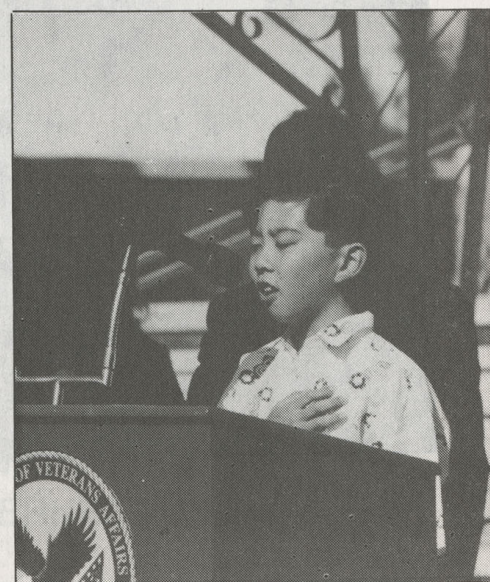
51ST ANNIVERSARY BANQUET

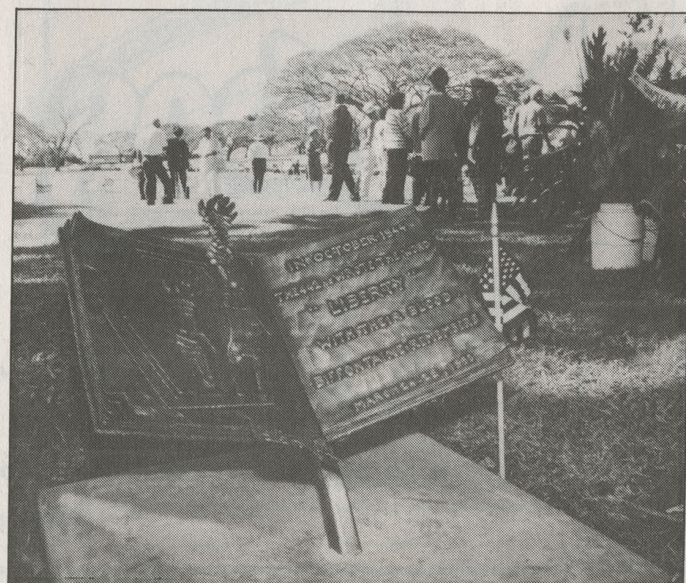
“Talk to me, Dad”





MEMORIAL SERVICE





Everybody Loves Tupperware...

You Can Have...

- * FUNDRAISING-25% PROFITS
- * GIFT CERTIFICATES
- * PART-TIME SELLING-It's Easy
- * MANAGERSHIP+BONUSES
- * EXECUTIVE MANAGERSHIP+
DODGE CARAVAN
- * PRIZES-TVS, STEREOS, JEWELRY,
APPLIANCES, FURNITURE, TRIPS!
- * YOUR OWN HOURS-FREE TRAINING
- * SHOWERS, OFFICE SHOWS, MICROWAVE
COOKING DEMOS.
- * \$200 Sales Kit for \$89.28
- * Use this ad for \$5.00 discount

CALL: GRACE & GARY FUJII
Phone: 536-7939

SONS & DAUGHTERS OF 442 RCT
Chapter

Tupperware

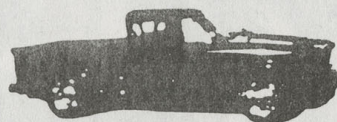


*SUPPORT
YOUR SPONSORS*

LENSCAPES PHOTOGRAPHY

Alan Kubota
Ph. (808) 737-2685

2533 Saul Place
Honolulu, HI 96816



BANNISTER AUTO BODY SHOP

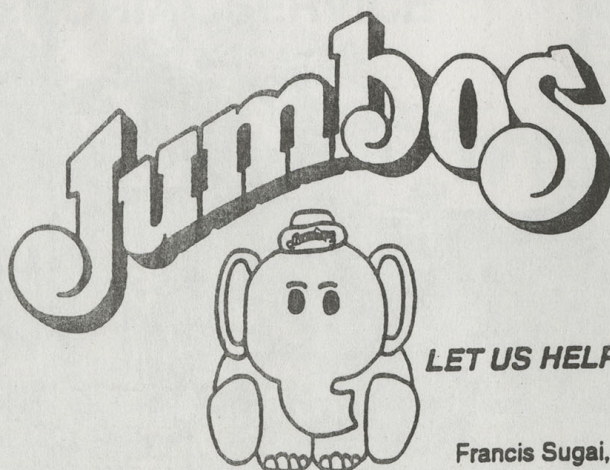
BLAKE TAKAEZU

708-A BANNISTER ST. TELEPHONE
HONOLULU HAWAII 96819 (808) 847-7800
FREE ESTIMATES



Fumigation (Tent)
Ground Termite Control
Drywood Termite Control
General Pest Control

Eugene M. Yamane, 522-B
George "Rocky" Tanna, 522-B Bus. Phone
Sales Rep 456-4258



Favorite Island Catering

Catering Menu for all occasions
Free Delivery with minimum order
Pupu Menus
Fund Raising
Personalized and Friendly Service

LET US HELP YOU PLAN YOUR NEXT PARTY OR FUNCTION!

839-5442

Francis Sugai, Founder, 1967 Regt. HQ & HQ Co. 442 President 1968-1969

Catering Department - 1052 Ahua St. Honolulu, Hawaii 96819

AMERICAN MUTUAL GROUP

- American Mutual Underwriters, Ltd.
- Prosperity Services, Inc. *
- Financial Designs, Inc.
- Compensation Consultants, Inc.

Offices in Hilo, Hawaii; Lihue & Kapaa, Kauai

TOTAL FINANCIAL SERVICES

560 North Nimitz Hwy. #207

Honolulu HI 96817

Phone; (808) 522-8650

*Securities through integrated Resources
Equity Corporation

Member NASD/SIPC

Boulevard Saimin

'We make it the old fashioned way!'



Take Out Available

841-7233

(Medics)

1425 Dillingham Blvd.

Mon.-Sat. 9:30 am - 9:00 pm Sunday: Closed

Kawada's

CUSTOM DRAPERIES

DRAPERIES-CARPET-UPHOLSTERY

MINI-BLINDS & VERTICAL BLINDS

Free Estimates

HOWARD KAWADA

Phone 487-8872

98-027 Hekaha St. #49 Aiea, Hawaii 96701

We Do Our Own Sewing & Installation



PAUL M. TAKAEZU

Agent

Lincoln Liberty Life/Hawaii, Inc.

1580 Makaloa St. Suite 1111

Honolulu HI 96814

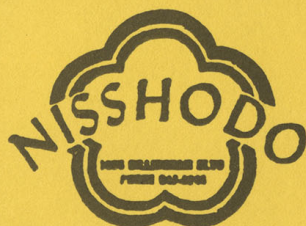
Bus: (808) 955-4422 Res: (808) 595-2014

ALL AMERICAN LIFE

Insurance Company

A USLIFE COMPANY

NISSHIDO CANDY STORE



Kokea Center # I-5

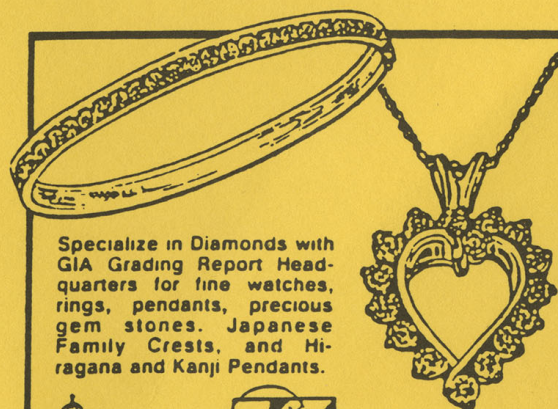
1095 Dillingham Blvd.

Honolulu HI 96817

Ph: (808) 547-1244

Tommy Hirao (232 Engr./Band)

Mochi - Chi Chi Dango - Manju



Specialize in Diamonds with
GIA Grading Report Head-
quarters for fine watches,
rings, pendants, precious
gem stones. Japanese
Family Crests, and Hi-
ragana and Kanji Pendants.



KAKESAKO BROS. JEWELERS

923 Alakea St Honolulu Hawaii 96813 Telephone: 536-4036 Validated Parking

The 442 Veterans Club
933 Wiliwili St.
Honolulu HI 96826

NON PROFIT ORG

US Postage
PAID
Honolulu Hawaii
Permit No. 209

ADDRESS CORRECTION REQUESTED

Mary Kochiyama
545 W. 126th St. Apt 3B
New York, NY 10027