

# CANE NEWSLETTER

Committee Against Nihonmachi Eviction

july-aug. 1974

vol. 2 no. 7

## Housing: CANE's Central Focus Residents Demand Justice From RDA

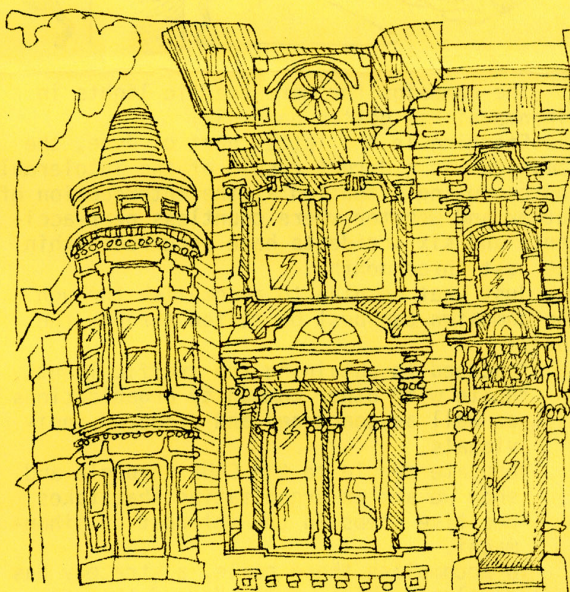
At the last General meeting, a vague plan for a Housing Campaign was presented to the membership -- a plan which immediately met with many questions and criticisms from those present.

The plan concerned getting the demands of three residents on the 1700 block of Buchanan met and a demand to rehabilitate several large homes for low-cost housing on the 1700 block of Laguna. To the membership, the plan was limited in its effectiveness and as one member said, "What we need is to put on agitation and confrontation" to force the Redevelopment Agency to meet the demands, primarily the residents'.

Although the membership voted in favor of the plan for a Housing Campaign it was not clear how we would force the agency to meet the demands and how people could become actively involved in the struggle.

Following the General meeting, the ad hoc Housing Committee and the Coordinating Committee agreed that the original plan was premature and without clear goals and actions that could mobilize the people to confront the RDA.

cont. on page 4



## JACL Votes Support for CANE Delegates Approve Resolution, 68 to 3!



A CANE resolution condemning the redevelopment process and declared to have "a 99 per cent chance of losing" was passed by an overwhelming 68 to 3 vote at the recent 23rd Biennial National JACL Convention in Portland.

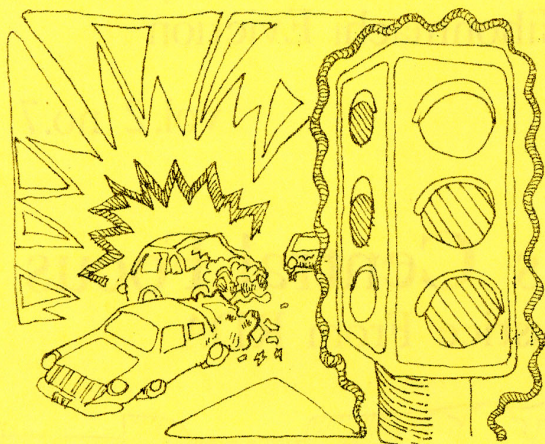
The resolution, sponsored by the JACL chapters of Sacramento, San Mateo and Bay Area was a last-minute decision by the Coordinating Committee which saw a possible opportunity to have this national group take a stand on redevelopment, a destructive force which has dispersed communities throughout the country. Then in mid-July, the Coordinating Committee, on a suggestion by the San Mateo chapter, moved to send three CANE members -- Saichi Kawahara, Joyce Nakamura and Lucien Kubota -- to lobby for the resolution.

For the trip, three goals were established:

- 1) make JACL take a position on the CANE struggle and the destruction of Nihonmachi,
- 2) find out which JACL chapters supported the CANE struggle (creating a basis for future working relationships) and 3) publicize the CANE struggle nationally by educating the JACL delegates in attendance.



# Building A Safer Community



The campaign for more traffic lights in Nihonmachi has gotten underway.

Starting in the latter part of June, the campaign was a direct result of the intolerable and confusing situation at the intersection of Sutter and Webster where countless near-accidents and six accidents have occurred within the last three months.

Just what we plan to accomplish through the campaign can best be stated through the goals:

- \*succeed in obtaining the traffic lights.
- \*unite with other community organizations as well as concerned and affected individuals.
- \*educate people to the CANE struggle and show we are an organization that takes positive steps in the interest of Nihonmachi.

To accomplish these goals, a strategy has been developed which would demand that the city's Department of Public Works work for public safety as an important aspect in keeping Nihonmachi a residential and small business community, and expose the city's disregard for the people's safety.

In carrying out this strategy we have so far drawn up a petition and sent a letter to the Board of Supervisors. Dianne Feinstein forwarded her letter to Public Works who, in turn, replied to us that a light would not be installed until 1975! The reason, said Public Works, is a lack of money. In the meantime, how does the city plan to alleviate the hazardous conditions?

For future actions, plans have been developed that would draw up further letters, leaflets and other types of mailings to various organizations, attempt to receive endorsements from other organizations and work to publicize the situation.

These steps, we feel, will pressure Public Works in taking immediate steps. And we can be most optimistic in succeeding, but its complete success will be determined by the participation of the membership. For example, three years ago, a similar situation occurred when Public Works was confronted and pressured by the community in installing lights at the intersections of Sutter and Laguna and at Sutter and Buchanan.

When first approached at that time, the city used a similar excuse to ignore the safety of the community. But when individuals and groups in Nihonmachi banded together and applied pressure -- presto -- the city suddenly found the funds and instantly installed the lights. Community mobilization, then, is the answer to bureaucratic red tape!

But should the focus of the campaign remain solely at Sutter and Webster? During July, the Coordinating Committee voted to expand our efforts to include the intersection of Sutter and Octavia where in the near future, residents, especially, Issei, will grow in population because of the vitally-needed JARF Project.

We can see our fight for the traffic light has only begun and as mentioned earlier, membership participation will determine its success.

## A Constitution To Stabilize

The General Membership will finally be presented with the finished form of the important Constitution revision proposal at the upcoming General meeting.

However, the proposed new Principles which are to be inserted into the Constitution following approval by the membership, will not appear. Originally, plans had been established to hold workshops in order to clarify and achieve feedback on the proposed Principles as was the case in June. But due to the great amount of work concerned with putting together the Housing Campaign, the Coordinating Committee felt it should not deal with the Principles at this time since the campaign relates directly to our current Principles.

More will be said about the proposal on the new Principles in the near future so that everyone understands the situation.

Around the Constitution revision, members will be allowed to study this document for a month before voting takes place at the General meeting following this upcoming one.

Those with any sort of disagreement with the Constitution proposal are urged to voice their opinion, now during August or at the General meeting.

The completion of the revision, which has taken almost four months will hopefully work in contributing a general sense of direction for CANE.

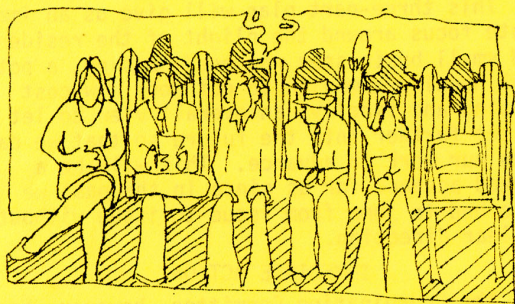
Specifically, the importance of the new Constitution, the committee said, is to logistically guide CANE in its future work and to allow everyone to see the structure of the organization. The main emphasis of this is to place more decision-making responsibilities upon the General Membership and to allow for a better distribution of work.

With this technical necessity now completed, the organization can move on to the concrete external issues confronting Nihonmachi with a better sense of internal functioning.



# General Meeting Summary

## New Officers Installed, Two Campaigns Introduced



Strong participation by many of the over 70 members in attendance characterized last month's General meeting which saw the initiation of a major Housing Campaign, a Traffic Light Campaign and the installation of the newly-elected officers.

In opening the meeting, Tokuo Miyao, CANE advisor, led a ceremonial swearing-in of the new officers.

During a brief introduction, Miyao recollected the past 16 months,--the period of CANE's existence -- and told the officers that their future duties would be to lead the organization through a straight and principled path.

Additionally and more importantly, Miyao stressed the significance of membership participation in successfully advancing CANE's struggle.

Following this point, Miyao recited a short oath of office and repeated by new officers Saichi Kawahara, president; Joyce Nakamura, First Vice President; Freddie Powell, Second Vice President; Glenn Omatsu, Recording Secretary; Helen Liverette, Corresponding Secretary; Sue Wong, Treasurer; and George Iwao and Helen Jones, Representatives-at-large.

### HOUSING

In the most important presentation of the night, Joyce Nakamura, a member of the Ad Hoc Housing Committee, outlined a five-part plan which focused on the plight of three residents on the 1700 block of Buchanan, their demands to the Redevelopment Agency and a demand for the agency to rehabilitate several large buildings on the 1700 block of Laguna for low-cost housing.

The ad hoc committee proposed a campaign based on our two Principles to pressure the RDA to meet the demands of the residents and a demand to rehabilitate the buildings. But the plan fell short in developing a concrete strategy and the reasons for a campaign. What resulted was general confusion as to the goals of the campaign and how the members could get involved. Questions and criticisms came forth from the membership which clearly showed to everyone that more discussion, analysis and planning would be needed to establish an effective Housing Campaign. (See Housing Articles)

Despite the vagueness of the plan, the membership voted in favor moving on a campaign as proposed by the ad hoc commit-

tee.

In introducing a campaign to have a traffic light installed at the corner of Sutter and Webster, Freddie Powell cited the many hazards of that intersection and presented three goals for the campaign: 1) get the light installed, 2) promote a working relationship with other community groups, and 3) educate people to the CANE struggle. (see Traffic Light article.)

In an earlier report, John Ota, a member of the ad hoc Principles Committee reported that the workshops held in June over the proposed new principles were a highly successful format for gathering ideas. Although John felt the membership was ready to vote on the proposal, several people contended that a further explanation of the wording was needed. Taking this into consideration, the membership moved to postpone the voting until everyone was clear as to what the principles meant.

Around future workshops, John said several would be held during July to explain both the proposed Principles and the Housing Campaign. (But because of the need to consolidate the activists about the Housing Campaign, the workshops were held off.)

### L.A. SUMMARY

Members were also presented with a detailed slide-show report of CANE's historic Memorial Day trip to Los Angeles to meet with the Little Tokyo Anti-Eviction Task Force. The presentation analyzed the similar situations of our two communities.

To mutually keep our two organizations informed of future developments, members voted to set up an on-going exchange of information between CANE and the Task Force.

In other business, Boku Kodama of the Constitution Amendment Committee reported that the revisions of our guiding document were completed and should be reviewed by all members. Treasurer Sue Wong also reported that CANE's assets currently total \$2029.

We urge everyone to attend the next General meeting, August 9, 7:30p.m., at the Sutter YWCA, because it is your input and participation as the highest decision-making body in CANE which will carry our struggle forward in a truly responsive and democratic manner. We look forward to seeing you!

## Upcoming Agenda

For the upcoming General meeting, we will focus on two highly important items:

- 1) the Housing Campaign
- 2) our recent victory at the JACL Convention in Portland.

Other items to be presented:

- \* Traffic Light Campaign
- \* Constitution revision proposal

Date: August 9

Time: 7:30 p.m. -- sharp!

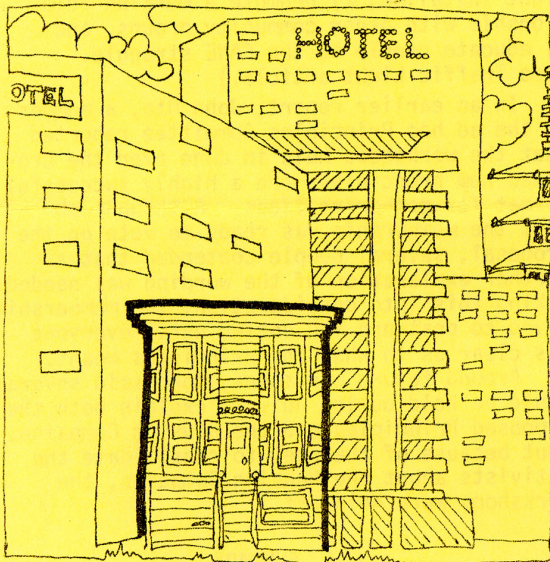
Place: Sutter St. YWCA



## Housing Campaign Begins To Move

The reason for the vagueness was simple and evident: the plan was drawn up without adequate input, discussion and planning.

Since that time, the Housing Committee and the Coordinating Committee have been working long hours and struggling to develop an immediate plan that will force the agency to 1) meet the demands of the Buchanan Street residents and 2) explain why they have harassed, intimidated and even threatened to throw residents out into the streets.



### GENERAL STRATEGY

What has emerged is a three-part plan which will link the immediate problems of the residents to a long-range perspective. The central focus of the plan was cited as the general housing situation in Nihonmachi because the lack of low-cost housing is the main reason residents are being forced to leave the community -- most of whom want to stay.

First, the immediate focus of the plan will be the Buchanan Street residents and their demands. These residents are facing evictions with no assistance from the agency and are standing on these just demands:

- \* Shimamotos -- a suitable relocation site in Nihonmachi such as the JARF Project.

- \* Matsubas -- a stop to agency harassment and a written guarantee for benefits.

- \* Wadas -- a suitable relocation for his sushi business on either Buchanan or Post and a residence in Nihonmachi.

Second, we will investigate the housing situation in Nihonmachi to develop a strongly documented case showing the lack of low-cost housing and the genuine need that exists among present and past evicted residents for such housing. This will form the basis to pressure the RDA and other government agencies for more housing, particularly family units in Nihonmachi.

Third, we will investigate and develop a long-range perspective of where and why CANE must move to fully carry out our two guiding Principles. This will involve investigating those forces which play a strong role in the Japanese community (NCDC's plans for development, the current status of the Kintetsu bowling alley and hotel, the current situation with the Issei Memorial Center, the current situation with the RDA so that we can deal

with them more effectively in the future, and the effects on Nihonmachi of a planned transit line along Geary Street.)

This three-part plan will give us an immediate focus around the plight of the residents and small businesses who need housing, a potential housing campaign to get more low-cost housing and finally, an overall view to let us see further into the future so that we can plan our work in advance. This will be a marked advance for us since in the past we have had to jump from issue to issue without a clear direction.

### IMMEDIATE ACTION

The Coordinating Committee, however, has placed top priority on the immediate needs of the residents on Buchanan and the development of a Housing Campaign. The reasoning behind this is that without housing there will be no residents and without residents there will be no Nihonmachi. What would remain is a disgusting tourist showcase.

To get the residents' demands met, an immediate plan of action has been drawn up:

- 1) hold a block meeting with the Buchanan Street residents and jointly decide upon a course of action.

- 2) strongly request a meeting with NCDC and the developers affecting the three households for the purpose of gaining their support.

- 3) demand an open meeting in the community with the agency to force them to answer the residents' demands.

If the agency should refuse the demands, then stronger action will be taken. As in the past CANE will mobilize its massive support -- its strength -- as it did in our struggles around Kintetsu, JARF, and events like Sakura Matsuri, to pressure the RDA to meet the demands.

For the moment, this plan is a set of ideas and tactics that still needs further investigation but it more importantly needs to be questioned, criticized and developed jointly by the entire membership.

This is a crucial period for CANE because it is now that we will take the offensive in implementing our two Principles against the agency and other forces who side with the agency.

### CONSIDERATIONS

Listed below are some questions that were unresolved as of the Saturday, July 27 Coordinating Committee meeting. It is important that everyone examine these questions in light of our campaign and come to the General meeting with questions and suggestions on how we might move forward.

- 1) If the agency refuses to meet with CANE, what alternatives should we use to force the agency to answer to the demands of the residents? Should we use a massive publicity campaign, go to court to halt any future developments in Nihonmachi, hold a demonstration at the agency's office, any other suggestions?

- 2) How far should we push the RDA to meet the demands of the residents? What political leverage can we apply?

- 3) How can people become involved in the campaign? Which groups should we go to for support? How would you like to help (no matter how small)?

See you at the next meeting.



## CANE Gets Support from JACL Delegates

These goals, we felt, were important in dealing with the JACL, since as a national organization with a voice in Washington, D.C., it had claimed throughout its history to represent the Japanese-American communities.

With a huge task before them in lobbying for the resolution, the CANE delegation, with help from a handful of chapters and Mark Masaoka, a member of the Little Tokyo Anti-Eviction Task Force (and nephew of former JACL Director Mike Masaoka) spread the word of CANE and redevelopment.

Delegates readily related to the CANE struggle because of similar situations across the nation such as the destruction of communities in Salt Lake City, Seattle, Philadelphia, Sacramento, Denver and Los Angeles.

### OPPOSING DELEGATES

The minute number of delegates voting against the resolution did so because of either they are known to have vested interest in the redevelopment process or were in the influences of certain National JACL leaders.

But was the influence of the certain leaders in the interest of the communities? Ask yourself when the last time you saw the JACL leadership involved in a community struggle was.

If the focus of the National JACL was in the interest of the communities, why then, in such cities as our own San Francisco, are there so many grassroots organizations? The answer is simple: these organizations developed because they saw they had to help themselves -- Kimochi, the Issei; JCYC, youth; JCS, social services; and CANE, redevelopment.

And why is it that the National JACL cannot establish ties with these community organizations? It seems clear that the work of the National JACL staff is determined by the ideas of a few, serving only a few; distant from the community. A prime example of this method for the few can be seen in the way they received over \$65,000 for a gerontology project a couple of years ago for the Bay Area.

### COMMUNITY RIPOFF

In obtaining the funds, the National JACL staff used the names of many community groups, giving the misleading idea these organizations were in support of the national office. Furthermore, the program as proposed was established by a hand-chosen staff, without any assistance or input from community groups. As a result, when various groups discovered how the funds were granted, an uproarious united community front literally threw the project out of the Bay Area.

However, we need to make a distinction between the National JACL staff and the many local chapters. Long before going to Portland, we maintained a faith in the honest forces of the JACL to see the struggle as it is and we were always confident in receiving their support. We weren't disappointed.

Even following such comments as "You have a 99 percent chance of losing" (David Ushio, National JACL Director) and "It is quite evident that the convention will refuse giving CANE such a recognition" (Howard Imazeki, English Editor, Hokubei Mainichi), we felt confident in relying on the support of the vast majority of people -- not on the few so-called powerful individuals.

### HALF-A-VICTORY?

However, now, even with the passage of the resolution, the battle is only half over because the future will tell if the National JACL will live up to the wishes of the 68 chapters to aid not only CANE but other anti-redevelopment groups as stated in the resolution:

"Be it resolved that the Japanese American Citizens League National Council urge the Congress of the United States of America to review nationwide, the redevelopment program on the basis of seeing the needs of the local people and small businesses and take appropriate action to rectify the shortcomings of urban renewal programs.

"Be it further resolved that the Japanese American Citizens League National Council 23rd Biennial Convention support the principles of the CANE struggle, which are:

1) Stop the destruction and dispersal of the Japanese community and to keep Nihonmachi a small business and residential area.

2) Uphold the rights of residents and small businesses.

and to actively lend its resources to stop any threat of destruction to any Nihonmachi community."

A full account of the trip and the struggle that occurred about the resolution will be presented at the next General meeting. Everyone is encouraged to come and share with the CANE delegation, one of the most exciting points in CANE's history.

## General Information

CANE ADDRESS..... 1858 SUTTER ST.  
San Francisco, California  
94115

OFFICE HOURS: 3 p.m. to 8 p.m. weekdays  
10 a.m. to 5 p.m. Saturdays  
closed Sundays

PHONE NUMBER:..... 921-8841

### COMMITTEES ...

TENANT OUTREACH - maintain consistent contact with residents. Is trying to actively incorporate more residents.

NEWSLETTER - provides internal information and analysis for CANE members on issues and events pertinent to CANE.

PUBLICITY - writes general articles for newspapers, makes t.v. appearances, and goes to schools, churches, and other community organizations in the Japanese community.

ADMINISTRATION - handles CANE events, fund-raisers, and internal organization.

COORDINATING COMMITTEE - representative body of residents and committees, the major decision making body of CANE.



On Friday, July 26, Howard Imazeki, English Editor of the Hokubei Mainichi wrote an editorial ridiculing CANE and its efforts in having a resolution condemning redevelopment passed at the recent National JACL Convention. In response, on Thursday, August 1, CANE's elected officers wrote a rebuttal, not only correcting Imazeki's errors and falsehoods but also portraying the true nature of our organization and the importance of our voice at the convention.

## EDITORIAL COMMENT

### Machiavellian CANE

By HOWARD M. IMAZEKI

A maverick San Francisco group called CANE is introducing a resolution at the National JACL convention, being held this week in Portland, demanding its support — knowing very well that the resolution will be rejected.

Incidentally, if you didn't

know what CANE stands for, it is an acronym for "Committee Against Nihonmachi Eviction." The group has made a lot of noise; to the extent of being invited by local TV stations to appear on their programs to clarify its philosophy and program. This newspaper has also given a lot of space in the past to present and clarify its philosophy and what it is trying to do.

What has so far come through publicly is its anti-establishment mouthing; particularly against the San Francisco Redevelopment Agency and the Kintetsu Enterprises. The SFRA, being a government outfit, needs to be watched of course, so that the

actions it takes are humane and just. The Kintetsu, too, needs to be watched so that this Japan-based corporation's enterprises in our Nihonmachi are community-oriented.

But the CANE, so far, has not let us on its idea of how to remake Nihonmachi: our community now in the process of redevelopment. We often wonder if this group has any program at all. Its mouthing has become boringly the same.

What right does it have to demand a national recognition and support from the National JACL? It is quite evident that the convention will refuse giving CANE

such a recognition. The politically-wise CANE leadership should be very well aware of the fact that this is evident. Knowing this to be evident, why then is CANE forcing the issue?

The answer lies in its anti-establishment policy and its political thinking. When the resolution is rejected, as it should be, the CANE leadership can then say, "Look! the JACL has very little concern for our little people!" as though to claim that CANE is the only community organization that is "concerned" with the "little people."

In politics, they call this sort of maneuvering Machiavellism.

## Letter to Editor

### CANE Resolution Passes at JACL National Conclave

DEAR EDITOR:

Your recent editorial comment on the Committee Against Nihonmachi Eviction contains numerous erroneous assertions, and in the spirit of community dialogue we would like to correct your errors.

(1) You state that CANE presented a resolution before the National JACL convention in Portland last week "knowing very well that the resolution will be rejected." We disagree.

As an organization not affiliated with the JACL, CANE approached several local JACL chapters to sponsor our resolution and to obtain the support of as many JACL members as possible. Prior to the convention, five JACL chapters — Sacramento, San Mateo, Bay Area, Orange County and Metropolitan Los Angeles — agree to co-sponsor the resolution on the floor of the convention.

At the suggestion of the San Mateo chapter, we sent three members from our organization to Portland to talk to delegates from other JACL chapters to gain their support.

At the convention itself, our representatives found widespread support for CANE. Our resolution passed the convention with slight amendments by a vote of 68-3.

(2) You claim that CANE had no right to go before the National JACL with a resolution regarding the injustices now occurring in the redevelopment of Nihonmachi. We disagree.

Redevelopment is a national issue which has affected numerous Japanese American communities. Because JACL is a national organization which has claim-

ed to represent the interests of the Japanese American population, we believe that it should join with other community organizations in calling for a correction of the shortcomings of the redevelopment program.

Moreover, National JACL is very much a part of the redevelopment process in our own Nihonmachi since it is presently building its new headquarters in our community. We believe that JACL should take a stand on the current redevelopment situation in Nihonmachi. The very least it could do is to offer its assistance to the residents facing eviction who are now being harrassed by the Redevelopment Agency.

(3) You state that CANE is simply concerned with "anti-establishment mouthings." We disagree.

CANE is an organization of four generations of Japanese Americans and persons of other races concerned with the future of Nihonmachi. Within our organization are progressive people and conservative people. What unites us together is not some mystical opposition to the "establishment," but rather basic agreement around two guiding principles:

First, to stop the destruction and dispersal of our community and to keep Nihonmachi a residential and small business community; and second, to uphold the rights of residents and small businesses.

When we speak of destruction and dispersal, we speak of more than the physical demolition of buildings. We mean the housing needs of our people and the social fabric of our community.

From these guiding principles we fought to protect the right of CANE members such as the Wong's Bait Shop, Yamato Auto Repair, and Kintoki Restaurant to remain within Nihonmachi after they received eviction notices from the Redevelopment Agency.

From these guiding principles, we assisted the Japanese American Religious Federation housing project by helping to relo-

cate residents off the JARF site to promote the rapid construction of this most important housing. The JARF committee has expressed appreciation to CANE for this assistance.

From these guiding principles, we worked with Christ United Presbyterian Church to promote the proposed construction of the new church facility while seeking the help of the church board to insure that the rights of residents on the church site were respected by the Redevelopment Agency.

From these guiding principles, we are presently upholding the rights of three CANE member families facing eviction on the 1700 block of Buchanan Street. The three families hold expired 30-day eviction notices but have received little assistance from the Redevelopment Agency. Instead of meeting the families' needs, the agency has carried out a policy of harrassment with one agency representative threatening to throw one elderly couple out on to the streets. CANE believes that these families should not have to move until the agency meets their needs.

(4) You assert that CANE has put forth no program whatsoever concerned with our concept of how Nihonmachi should be redeveloped. We disagree.

Throughout the past year, we have constantly stressed the need for low-cost family housing for Nihonmachi. We have pointed out that virtually the only low-cost housing will be the JARF project. However, only one-third of JARF's 245 units will be low-cost federally subsidized units. Other housing now being built in the area is priced "market rate," starting in rent at \$225 a month for a studio apartment. Who can afford these prices?

We have opposed the policies of the Redevelopment Agency and Kintetsu Enterprises because they are the major forces destroying low-cost housing in our community to transform Nihonmachi into a commercial-tourist showcase.

For example, early this year

in order to build the Kintetsu Kyoto Inn hotel, the Redevelopment Agency demolished three buildings which had long provided low-cost housing for families and Issei. CANE asks the question: Which does our community need — low-cost housing or another tourist hotel?

(5) Finally, you claim that CANE engages in "Machiavellian politics," using cunning and deceit to put forth our objectives. We disagree.

As a community organization, CANE opens itself to the criticisms of our fellow citizens. We ask members of the community to examine our principles and our actions and to compare these with the policies and actions of the Redevelopment Agency, Kintetsu Enterprises and their fellow travelers.

From this basis, all of us should ask: Who are the real Machiavellians in our community?

Sincerely,

CANE Cabinet:

Saichi Kawahara, Joyce Nakamura, Freddie Powell, Glen Omatsu, Helen Ayame Livertte, Sue Wong, Helen Jones, George Iwao.

July 28, 1974

EDITOR'S NOTE: In all fairness to CANE, this long letter to the editor is published in its entirety. Under ordinary circumstances, such a lengthy letter would be cut in half. According to a San Francisco delegate to the Portland convention, the CANE resolution

was passed during its final business meeting on Saturday, July 27, with one stipulation: that the resolution as it is worded now would be withheld from public announcement for 60 days during which time the resolution may be rewritten.



## Another's View Of CANE

Recently, Barry Morinaka (a member of the LTATF) worked with CANE during his month-long visit to the Bay Area. Barry was very curious about the every day work of CANE and decided to attend all of the standing committee, CCC, and general meetings. He lent a good analytical and objective view during the course of all those meetings. After working with us we asked Barry to write the following article for the Newsletter expressing his perceptions of CANE. His brief participation in CANE has strengthened our ties with the Task Force and we wish to thank Barry for his enthusiasm, contributions, and willingness to work with us.

I have spent the past four weeks attending meetings with different members of CANE. It has been a very rewarding and quite an educational experience. My temporary involvement with CANE stemmed from the initial meeting between the two groups which took place Memorial Weekend.

During this period of limited participation, I have noted the strong commitment of CANE activists, the parallels in Little Tokyo (LA) and Nihonmachi (SF) redevelopment projects, and the structuring of the CANE organization.

I find that CANE works in a very democratic manner, one in which all members may voice their opinions, comments, and criticisms. By democratic, I mean issues will be raised from the CANE Co-ordinating Committee(CCC) and then sent to the general membership to be unified over or issues might be raised at general membership level and then be forwarded to the CCC. (an example was the presentation of the new principles that were given criticism at the general meeting) The members of CANE go about their day to day work very systematically and do a thorough job in their respective work areas. Members of CANE also have a very good understanding of the total picture of redevelopment in the Bay area with Western Addition in particular. The similarities in the two communities (LA & SF) does

not seem too surprising because the same forces can be seen at work, negating the importance of community self-determination: 1) Foreign capital investment from Japan corporations, 2) the redevelopment agencies, and 3) the local government-corporate structure.

It is hopeful that more CANE members will have the opportunity to visit LA, such as the previous delegation. It is also hopeful that more LTATF members will go up to SF to visit CANE and the Nihonmachi redevelopment area.

The LTATF feels that in the near future the two organizations will put forth a joint statement (which is currently being worked on) and then present joint principles of unity, if at all possible. I have attended the past few CCC meetings and realize that CANE is in the process of revising their current principles, therefore the latter can be seen as concrete future work for both CANE and the LTATF. I am aware that both CANE and the LTATF have much work to do within their respective communities, but we should not overlook the importance of organizational unity because redevelopment must be viewed in the context of a "National Issue".

Barry Morinaka-Member of Little Tokyo Anti-Eviction Task Force (LTATF)

## Community Briefs

August 24, 1974 marks the first day of a week long series of special events sponsored by the Buddhist Churches of America in commemoration of their 75th anniversary. The program includes a variety of events such as historical exhibits, films on Buddhism, Shigin and Shibu, Buddhist lecture series, and even a Buddhist vegetarian cooking class. The events will be held in various locations within Nihonmachi and several places outside of the area. The culmination of the anniversary will be a commemoration service to be held on Sunday, September 1, at the Civic Auditorium.

Ministers and lecturers from all over the country will be participating in the special events. The general chairman is Rev. Koshin Ogui of the San Francisco Buddhist Church with Mrs. Masako Iwase, former CANE cabinet member, acting as the secretary.

On July 21, over 100 people, including CANE members, gathered in Oakland's Knowland Park to enjoy a picnic sponsored by the Chinese Progressive Association (an organization fighting for the people's rights in the Chinese community.) The afternoon was filled with games, a skit on the racist attitude of the city's Board of Education in its busing program and an abundance of delectable delights. CANE thanks CPA for its hospitality and waits anxiously for a volleyball rematch.

Issei and Sansei shared a warm week of understanding and communications during mid-July with a series of events which worked enjoyably to bridge the generation gap.

Called "Issei Appreciation Week" the community's young and old came together to share the experiences of one another. The event, sponsored by Kimochi and JCYC, featured lessons in Japanese culture and arts and a picnic in Golden Gate Park.

CANE feels that it is events such as this which help to bring the community closer together and unite us in the concept of a people-oriented Nihonmachi.

CANE's Annual Picnic is coming up again, although plans are still being formulated. As you may remember, last year's event drew about 200 community people to Golden Gate Park for a potluck lunch, games, a skit and a raffle. Watch for more details of this promising event in the next Newsletter.

Last month our community was struck by the news of the death of William Kika, son of CANE members Mr. and Mrs. Kika. CANE members attended the funeral and presented koden. We are saddened by this event and wish to extend our deepest sympathies to the Kika family.



# CANE Questionnaire

In order for the Newsletter to truly help unify the entire membership around the future direction of CANE's work, we must stay close in touch with our readers. At present it is difficult for the newsletter staff to determine how you, our readers, feel about the Newsletter's articles and how you feel about the current work of CANE. We would hope you will fill out this short questionnaire to give us a better perspective of what you think. We hope to use these ideas to help move CANE forward, and make the Newsletter truly the internal communications arm of CANE. Please bring it to the General Meeting or mail it in to 1858 Sutter St., S.F. 94115.

- 1.) Do you think the articles are too long?    yes    no
- 2.) Do you think the articles give adequate information?    yes    no
- 3.) How can the Newsletter be improved?
  - a. articles be shorter?
  - b. articles should be written more simply?
  - c. more graphics?
- 4.) What kinds of articles do you like to read in the Newsletter?
  - a. minutes of last general meeting.
  - b. community briefs-articles about other community activities.
  - c. coordinating committee reports.
  - d. agenda for upcoming meetings.
  - e. articles about CANE activities.
  - f. articles about individual CANE members.
  - g. articles on other RDA struggles.
  - h. other \_\_\_\_\_
- 5.) How can the general meetings be improved?
  - a. meetings should be shorter.
  - b. fewer items on the agenda.
  - c. clearer more concise reports.
  - d. more small group discussions.
  - e. more visual presentations.
  - f. guest speakers from other anti-redevelopment groups.
  - g. other \_\_\_\_\_
- 6.) Do you like the idea of small informal workshops at CANE members homes informing you about the major focus of CANE?    yes    no
- 7.) Do you think CANE should have workshops;
  - a. once a month.
  - b. once every two months.
  - c. only when a major event is going to take place.
  - d. other \_\_\_\_\_
- 8.) How should we handle the Japanese Translation at our general meetings.
  - a. on-going translation from the podium.
  - b. all Japanese speaking people in one part of the room and translation provided.
  - c. no Japanese translation at all
  - d. Japanese translation already written to be handed out at the meeting.
- 9.) Do you think CANE should work with other community organizations?  
which ones \_\_\_\_\_
- 10.) How often do you read the newsletter?
  - a. once in a while.
  - b. all the time.
  - c. 1 or two articles each issue.
- 11.) How do you think the National JACL can help CANE?
  - a. support (endorsement)
  - b. voice in Washington D.C.
  - c. publicizing CANE.
  - d. other \_\_\_\_\_
- 12.) Where should the General Meetings be held?
  - a. YWCA
  - b. UJCS
  - c. Konko-kyo Church
  - d. other \_\_\_\_\_
- 13.) What would be the most convenient time for the General Meetings?  
7:00    7:30    8:00



# ケン質問用紙

ケンの活動の「明日への指標」を中心に全メンバーの結束作りを機関紙が手助けする為には、私達は、その読者と綿密なつながりを保たなければならぬと考えています。然しながら目下のところ、機関紙委のスタッフとして読者が機関紙の内容やケンの近況活動についてどの様に感じているのかも適確に把握する事は、困難なのです。つきましては、皆様方の率直な御意見をお聞かせぬがたく下記の質問事項に、お答え下さる様お願い致します。これらの質問事項は、ケンの活動を向上させる為の手助けとして又機関紙を真のケン組織内に於ける「対話」のかけ橋にする為に役だてるものです。この質問用紙に御記入の上お集まりの総会に持参させるか否かは、ケン事務所の手郵送にて下さる様なおねお願い致します。

(以下の質問について意見を固めて下さい)

機関紙は充分なインフォメーションを記載していると思いますか？  
思う 思わない

機関紙の中でどの様な記事がお読みにしたいと思いますか。  
前回の総会の要約  
他のコミュニティ活動の近況  
調整委のレポート  
次期総会の議題  
ケン活動に關した記事  
ケンの各メンバーに關した記事  
他の再開発局斗争についての記事

総会はどの様にしたら向上されると思いますか？

総会を短かくする。  
議題を少なくする。  
いっしょに明解で簡潔なレポートをする。  
各グループに於て討論する回数を増やす。  
スライドや標画等の上映回数を増やす。  
再開発局反対グループからの代表者を招く。

機関紙をどの位お読みになりますか？

時々 常時 少数の記事

全米日系市民協会はケンの活動の手助けにしたいと思いますか？  
思う 思わない

どの様な手助けにしたいと思いますか？

支援証明書  
ワシントン連邦政府への提言  
広範な広報活動  
その他



その数種々のコミニティー団体などの様に、市民協会の  
 にも基金を得たのを見つけた。コミニティー諸団体が結んで  
 くるエリヤの計画を提出したものである。  
 したがって私達は、市民協会の幹部選出と  
 他の多くの支部の人々とも区別する必要があります。  
 ポートランド会員の途上私達は市民協会の中で、誠意  
 支部の人々を信頼して、私達は常にこの様な  
 人々の支援を得る自身があるのです。私達は常にこの様な  
 協会の前達には90%可能だとは思いません。ポートランド市長  
 事をも拒否するのは極めて明らかである。(ワード・今更  
 北米毎日編集長)と云ふことがあった。私達は少数の  
 いわゆる「実力者」に頼らず、大多数の人々の支援を  
 信頼してゆく自身があるのです。しかし、彼が中央  
 探検まで二つに割ったものの半は、前半のやま場を越  
 して後半は、下記の中央案が示す様に  
 市民協会は、二つに分けて、他の南南地区の諸団体に  
 支援を与えるという声明に従って行動するかどうか  
 の決断を下さなければならない。市民協会が三十三回年  
 の中央案は下記の通りです。  
 全米日系市民協会評事会は、有力な合衆国評会  
 コミニティーの人々、小商店の必要性を考慮に入れて  
 全米規模にわたる南南地区計画を再検討する。適当な  
 都市南南地区計画、不行きどきも修正する。適当な  
 手段を講ずる様に提言する。  
 全米日系市民協会評事会、三十三回年、二つの  
 争の目標を支援する。  
 二つの目標  
 一、日系三十三の破壊と撤去を、其日本町と小商店と  
 二、住宅地として認められ、  
 三、住民、小商店の権利を擁護する。  
 したがって、いかなる日系三十三の破壊工作も、中止  
 する。市民協会の力を諸君に提供するものである。  
 来たる総会に於いて、市民協会に對する態度が行なわれ  
 二の総会に出席し、二つの争の中で、最も感傷的、作事  
 二つとして、二つのポートランド会代表団と共にこの争を  
 話し合おう。



二、二月例総会  
 八月九日(金)午後七時半  
 YWCA (サウス・ストリート二階角)

議題

- 一、住宅問題
- 二、市民協会会費報告
- 三、信託獲得競争
- 四、二、規約















ギョーゴより

上記三層子の要綱のうち調整委はブキャナン街の住民要求  
即時獲得と住民獲得運動の推進を最優先事項に設定

しました。というのは住宅無しには住民は住み得ず、住民  
無くしては日系コミュニティはあり得ずからです。残るものと言へば嫌  
悪感が漂う“観光客用陳列ケース”に過ぎずのです。

住民連の要求を勝ちとる為の大巾なプランは以下の通りです。

- (1) ブキャナン街の住民ミーティングを開き共同して、この対応策の方針  
を決定する。
- (2) 三世帯に影響を及ぼしている日本町地域開発公社及び  
その用地開発業者へ会合を力強く申し入れ、それらの  
支援を得る方向で進める。
- (3) 住民連の要求を再開発局に認めさせる様再開発局を  
かき回し一般参加自由のコミュニティミーティングを要求する。

假に再開発局が私達の要求を拒否した時には、より強力な手段  
をとるものであり、つまり過去ケーンが行った様に（例えば近鉄反対  
斗争、宗教連盟や格闘家等）要求獲得の為、再開発局に圧力  
をかけるべく大規模な力強い支援斗争を展開するつもりです。

さしあたりこれら一連の考へ方立案は更に若干の調査を必要と  
していますがより重要なのは全メンバーが一丸となり値同、批評  
をし、そしてこれらを一応進展させる事です。現段階はケーンに  
対して一重大な時期にあります。それすら私達の一大目標を  
遂行する為、再開発局や再開発局側に立つ他の勢力に対し  
攻撃を加えようとしているからです。

下記の項目は、9月27日の調整委ミーティングに於いて解決  
されなかったものです。私達の運動に“活”を入れる点に於いて  
下記項目を皆で考へ、私達の意向性、指針についての値同や  
提案をもち總會へ参加する事が重要なことだと思います。

それら未解決の項目は以下の通りです。

- (1) 再開発局がケーンとの会合を拒否した時に住民連の要求を  
再開発局に認めさせる為、何とその準備手段としてやっていくの  
か？大規模な広報活動の展開、日本町に於けるこれ以上  
のいかなる開発を阻止する為の法廷斗争、再開発局へ  
デモンストレーションをかけるその他。

- (2) 住民連の要求獲得の為、どこまで再開発局と、吊し上げて

いくのか、どの様な政治的手段が採れるのか。

- (3) どの様に一般の人々をこの斗争に参加させていくのか。

どの組織団体へ支援を仰ぐか。

貴方自身がどの様に斗争に加わるのか。





再同発局の態度についての説明。  
討論を重ねた結果、この住民連の即応プランと長期にわたる  
ケンの展望とを結び合せて三骨子から成る要綱がまとまりました。  
多くの人の日本町にとりこみとの希望にもかかわらず、住民連に  
コミュニティから立ち退きを強いてきた主要因は、低家賃住宅の欠  
如にある為日本町の一般住宅状況をこのプランの欠点にも  
もつてきたものです。

オーに緊急課題は、ブキャナン街の住民連とその要求であり  
現在これらの住民連は再同発局から何ら援助が得られてい  
ない強制立ち退きを迫られており、各住民の要求は以下の  
通りです。

島本氏 = 例えば東教連盟の様子日本町地域内での  
適格な代替住宅確保。

松葉氏 = 再同発局のいなからせを食い止め立ち退きに際  
しての補償について書類上の確約書をとらける

オスハ、低家賃住宅の欠如と、現在強制立ち退きに直面している  
住民や過去に於いて立ち退きを迫られた人々が持っている  
低家賃住宅に対する真の必要性を示す確固たる資料  
作成の為、日本町に於ける住宅状況を調査あるものです。  
これはより以上の住宅、とり分け日本町における家族用住宅  
獲得に向けて、再同発局や他の政府機関へ圧力を  
かける基盤とするものです。

オスハ 私達の二つの目標をどの方向へそしてなぜ全面的に  
押し進めていかなければならぬかという長期にわたる  
展望を調査し発展させるものです。これは日系コミュニティ  
に於て重要な役割を占める諸勢力の検討を意味して  
いるのです。(例へば日本町地域同発会社の同発プラン)  
近鉄ボーリング場やホテルの近況、そして再同発局の近況  
等を検討する事により、将来これらの勢力とより効果的に  
対処出来る様にする。  
又一世記念館の現状や計画中のゲーリー街を突走し  
パートが日本町にあたる影響等についての検討等。

つた三骨子からなるこの要綱は、住宅、店舗を必要としている住民  
小商店の窮境に直ちに焦点をあて、低家賃住宅獲得に向けて  
可能性のある運動を展開し、最後に将来を見通す全般的な  
展望へと目もやり、そうする事により、時前に活動をおし進める  
事が出来るというものです。過去私達は明瞭な指針の欠け  
この課題から別の課題へととびまわつていたので、この事はあ  
つて私達に指針を示す事により得るのです。



## 日本町強制立ち退き反対委員会

jul.y-aug.

機 関 誌

vol.2 no.7



## 住宅問題: ケ-ンの中心課題

## 住民は再開発局に要求する

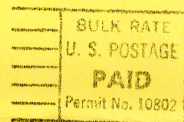
前回の総会に於て、住宅獲得運動に対する全般的なプランが提議され、当夜の参加者から、そのプランに対する賛同や批判が續き出した。プランはブキャナン街の住民達の要求と現在空家となっているラグナ街の家屋を修理して低家賃住宅として提供せよという要求獲得に關するものでした。多くのメンバーは、プランは、その効果の点から云つて限りがあつたとし、あるメンバーが云う様に「私達に必要とするのは数多くの要求、とりわけ住民の要求を再開発局に認めさせる様にする為論議を進め再開発局と真向うから対決する事である」という感じていた。この住宅獲得運動のプランは、満場一致で採択されたもので、私達の要求をどの様にして再開発局に認めさせるか、又一般の人々がどの様にこの運動に活発に加わつてゐるのかという点が予知の點でした。総会後、調整委員及び住宅獲得運動準備委員は再開発局と対決する為コミュニティの人々を動員するにあたり、その原案は未熟であり、明確なゴールや具体性の欠如を認め、その原因として、明らかにそのプランが充分な検討がなされず作成された事を指摘しました。その後上記両委員会は以下の事を再開発局に認めさせる為の即応プランの作成に全力をつくして来ました。

(1) ブキャナン街住民の要求。

(2) 住民を路上にほうり投げ出す様をいやからせをし強けて来た

次ページへ続く

C. A. N. E.  
1858 Sutter Street  
San Francisco, CA 94115



AIC 00  
ASIAN AMER. FOR ACTION  
545 WEST 126TH ST APT 3B  
NEW YORK, NY  
10027